



# **Rotherham Local Safeguarding Children Board**

## **Child Sexual Exploitation Delivery Plan 2015-18**

**VERSION CONTROL**

Version	Date	Author	Comments
1.0	21.07.2015	CSE Sub Group	DRAFT Delivery Plan approved at CSE Sub Group 13.08.15
2.0	26.08.2015	PM	Updates from some key leads on timescales, required actions and evidence
2.1	27.08.2015	PM	Updates from JI. Additional action to 2.8. Action update to 2.1, 3.3. Changes to key leads on 2.7, 2.8, 3.3, 5.1, 5.2, 5.3, 5.4
3.0	02.09.2015	GR / PM	BRAG Rating updates
3.1	03.09.2015	GR / PM	Updates from Implementation Group
3.2	07.09.2015	PM / GR	Updates from Action Leads
3.3	09.09.2015	PM	Updates from Action Leads
3.4	11.09.2015	SA	Added glossary of terms

**PROGRESS OF ACTIONS – BRAG RATING**

- BLUE** = The task has been completed.
- GREEN** = The task is on target.
- AMBER** = The delivery date may not be met and some remedial action is required.
- RED** = The task is significantly off target requiring additional resources or intervention as a priority

**LEAD OFFICERS**

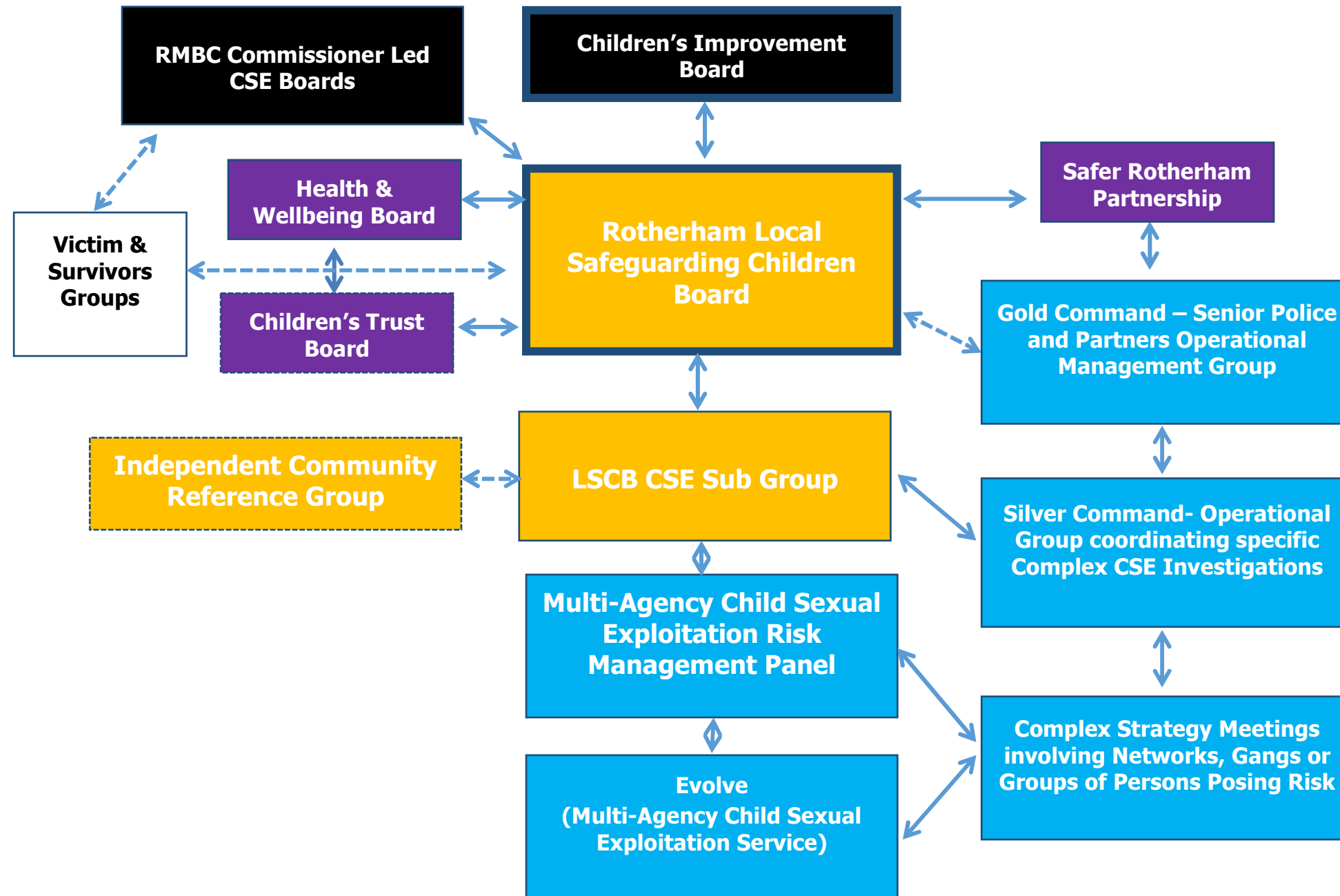
<b>Name</b>	<b>Job title</b>	<b>Agency</b>
Karen Borthwick	Director of Education and Skills	RMBC
Warren Carratt	Head of Service Organisational Development	RMBC
Nicole Chavaudra	Director Commissioning, Performance & Quality Assurance	RMBC
Linda Harper	Interim Director Commissioning and Performance	RMBC
Jason Harwin	Chief Superintendent, District Commander - Rotherham	South Yorkshire Police
Tracey Holmes	Head of Corporate Communications and Marketing	RMBC
Jean Imray	Interim Deputy Strategic Director of Children's Services	RMBC
Ingrid Lee	Assistant Chief Constable Protective Services	South Yorkshire Police
Sarah Mainwaring	Assistant Chief Officer for NE Division	National Probation Service
Lynn McIntosh	Interim CSE Lead	RMBC
David McWilliams	Assistant Director Early Help and Family Engagement	RMBC
Nancy Meehan	Head of Safeguarding and Quality Assurance	RMBC
Jane Parfremment	Director – Safeguarding Children and Families	RMBC
Tim Pinto	eSafety Officer	RMBC
Gary Ridgeway	Assistant Director (CSE Investigations)	RMBC
Teresa Roche	Director of Public Health	RMBC
Jo Smith	Post Abuse Coordinator	RMBC
Maryke Turvey	Assistant Chief Officer	South Yorkshire Community Rehabilitation Company
Deborah Fellowes	Scrutiny Manager, Scrutiny and Member Development	RMBC

## Methodology

This Delivery Plan has been authored to capture the wide ranging multi-agency activity required to improve Rotherham's response to CSE. This document has been informed by the multiagency LSCB CSE Strategy "The Way Forward for Rotherham", and progress will be reported back to the LSCB CSE sub-group on a bi-monthly basis, which in turn will report progress to the CYPS Improvement Board.

Each partner organisation of the LSCB is a complex organisation in its own right, with its own governance systems and authorising environments. Equally, the LSCB exists in a network of partnership boards, and whilst the LSCB does not have any direct commissioning powers, it can and should be exercising influence with commissioning Boards and bodies.

This delivery plan will evolve over time as our understanding of CSE improves and the context in Rotherham changes however the actions outlined here will be completed within 6 months to a year, some considerably sooner. The following Governance diagram outlines the structure of multiagency CSE governance in the Borough, and the Delivery Plan is included hereafter



## 1. PREVENT

Prevent children and young people from becoming sexually exploited through effective leadership, governance and a wider culture embedded within organisations that recognise the root causes of CSE, the signs and risk indicators and do all they can to tackle them.

No.	STRATEGIC OBJECTIVE	ACTIONS	LEAD OFFICER	WHEN	EVIDENCE OF PROGRESS	BRAG RATING
1.1.	Establish a clear view of the CSE profile in the borough to ensure that the Health & Wellbeing Board undertake informed commissioning of service provision.	Produce an assessment of need for CSE to be updated annually and linked to the JSNA	Terri Roche	Sep 2015	Needs assessment completed and linked to JSNA – July 2015 next due 2016	
		Use the assessment to generate a clear commissioning plan linked to the other relevant commissioning plans e.g. CAMHS Strategy.  Implementation of the outcome and recommendation of the commissioning review.	Linda Harper	Sep 2015  March 2016	A joint commissioning strategy with the Rotherham CCG has now been agreed by the respective senior management forums for both organisations. The strategy highlights the commissioning of CSE post support services as a joint priority. Work is underway to commission the longer term CSE post support services in partnership with a range of organisations, children and young people. The award of the new contracts scheduled for 1 April 2016	
		Develop and update annual Problem Profile based on data and intelligence from partner agencies	Jason Harwin	June 2016	Problem Profile produced and subject to annual review	
1.2.	The public understand the signs and symptoms of CSE and raise concerns early, alerting statutory services where necessary. Awareness campaigns include a clear message that CSE is a crime and will not be tolerated.	Engage with a PR/Marketing company to ensure messaging is well constructed and targeted.	Tracy Holmes	Dec 2015	A forward plan is being developed for the next 12 months with a timetable of events and budget implications which may include external marketing support.  A timetable for the media campaign is scheduled to be presented to the CSE Board by October 2015.  Campaign launched January 2016.	
		Develop a campaign aimed at the public including leaflets, posters, local radio, social media.	Tracy Holmes	March 2016	As above.	
		Develop a specific outreach campaign with the minority ethnic communities working with religious and community leaders and local voluntary sector providers who represent the communities	Tracy Holmes	March 2016	As above.	
		Work with a small number of schools (including at least one primary and one special school) to develop and pilot an awareness raising campaign aimed at children and young people. This will be cognisant of children with additional and complex needs.	Karen Borthwick	March 2016	This is under development and influenced by school term times and curriculum planning	

No.	STRATEGIC OBJECTIVE	ACTIONS	LEAD OFFICER	WHEN	EVIDENCE OF PROGRESS	BRAG RATING
1.3.	Intelligence, including 'soft' intelligence, about historic and current incidence and risk of CSE is timely, shared between agencies and treated with respect.	Ensure that specific concerns regarding CSE linked to locations, licensed premises, taxi licensing etc are shared and acted upon appropriately.	Jason Harwin	Nov 2015	There is now a weekly information sharing meeting involving police, Children's Social Care Services and Licensing Dept which shares information and enables rapid response to safeguarding concerns. This is currently subject to review to increase membership and information sharing processes	
		Make available a CSE 'crimestoppers' reporting line linked to the South Yorkshire Police data analysts.	Jason Harwin	March 2016	This is subject to further discussion at CSE Sub Group to ensure that any reporting process is sufficiently safe (in terms of 24/7 capacity) and flexible to ensure young people are protected.	
		Roll out awareness of the function and purpose of the Multi Agency Review Panel (MARP) to ensure intelligence is shared and resources are deployed to disrupt as appropriate	Gary Ridgeway	Dec 2015	Good progress made and MARP now meets monthly with some positive outcomes for young people.  A series of multi-agency briefing and awareness events have been held with more planned and good feedback has been received.	
		Develop a multi-agency process for agencies to share information and intelligence in a timely and effective manner.	Gary Ridgeway	Dec 2015	Some good progress made through the weekly information sharing meeting and further development is being progressed.	
1.4.	All children and young people in Rotherham understand what healthy, respectful relationships are and can recognise that the damage and the dangers caused by sexual bullying and exploitation (including on line) to both victim and perpetrator.	A refreshed early help strategy and delivery plan includes measurable actions for delivering this objective.	David McWilliams	Nov 2015	Refreshed strategy and delivery plan currently out for consultation.	
		Parents and carers involved with early help services will be worked with regarding the identification of Child Sexual Exploitation and associated risks	David McWilliams	Feb 2016	This requires a consistent approach to be taken by all front line practitioners including early help partners. Initial planning has started.	
		e-Safety practice across the partnership to be reviewed and a strategy to deliver ongoing improvement and review will be developed focused on online grooming, exploitation and sexual bullying.	Warren Carratt	Feb 2016	A three year e-safety strategy has been drafted and will be presented to the RLSCB Learning & Improvement group on 22/10/15.  An action plan has already been agreed and the e-safety officer is already addressing key issues on the stated areas.	

No.	STRATEGIC OBJECTIVE	ACTIONS	LEAD OFFICER	WHEN	EVIDENCE OF PROGRESS	BRAG RATING
		A meeting of Primary and Secondary School and College Heads and Pastoral Leads will be convened in order to agree ownership and sign off of a schools based awareness campaign and an agreed methodology for teaching healthy relationships in all educational facilities in line with the recommendations of the OCC.	Karen Borthwick	Feb 2016	This is to be arranged for the autumn term 2015	
		Schools, PRUs and colleges will provided with advice and guidance on pornography and have clear procedures for intervention for sexting and for anyone who has shared pictures without getting consent.	Tim Pinto	March 2016	Existing national guidance has already been sent to settings and the e-safety officer is working with the Healthy Schools consultant to ensure school leads have appropriate curriculum resources to deliver lessons as part of their SRE programme.	
1.5.	Potential perpetrators (children and adults) are identified early in a range of settings, including schools, youth clubs, young offender institutions and prisons.	Proposed work stream in joint commissioning plan for CSE with Clinical Commissioning Group.	Linda Harper	March 2016	A CSE transformation Board with key stakeholders has been established. This is currently exploring the evidence need for the commissioning of support services in relation to potential perpetrators. A piece of work is underway to track the operational process from the point of entry to the service via MASH to determine how robust our current processes are in the identification of potential perpetrators. This will further inform the commissioning intentions.	
		The Safer Rotherham Partnership will have a standing agenda item to ensure regular mapping of the issue of group and gang associated sexual violence and exploitation and mapping the services that are put in place in response.	Jason Harwin	Oct 2015	Some capacity exists to map group related CSE activity both locally and county wide. Experience has demonstrated that this is currently insufficient at a local level to respond to the mapping requirements of victims identified by the Evolve team.	
		Gang-associated sexual violence and exploitation will be explicitly identified as a risk in all gang-affected areas. All relevant strategies and operational systems are gender-proofed in a way that integrates learning and reads across the fields of child sexual exploitation, sexual violence, domestic violence and gangs	Jason Harwin	Nov 2015	Gang activity is effectively mapped at a county level but more work is required to identify CSE related activity within gang behaviour.	
1.6.	Organisational leadership and governance creates a culture in Rotherham where the causes, signs and symptoms of CSE are understood and identified and responded to quickly, effectively and with a determination to do the right thing in response.	All agencies and commissioned services will put in place a learning and development framework linked to the RLSCB multi agency offer for CSE for their workforce and report on compliance with this in section 11 audits.	Multi-Agency CSE Sub Group	March 2016	Some activity completed. This needs close monitoring through audit and scrutiny processes.	
		Multi-agency policies and operational systems for CSE will be updated to ensure that there are appropriate inter-agency systems in place regarding common thresholds of intervention for CSE.	Multi-Agency CSE Sub Group	Oct 2015	Evolve, MASH, MARP, and associated guidance documents. These are in use but yet to be reality tested.	



No.	STRATEGIC OBJECTIVE	ACTIONS	LEAD OFFICER	WHEN	EVIDENCE OF PROGRESS	BRAG RATING
		A tiered multiagency learning and development offer will be put in place for frontline practitioners working within the safeguarding system.	Warren Carratt	Oct 2015	In place and monitored and monitored through Learning and Improvement Sub Group	
		All agencies will have an effective whistle blowing arrangements for volunteers and professionals with compliance to be included as part of the s11 audit	Rotherham LSCB	Dec 2015	Each agency has existing whistle blowing policy. But further discussion at Dec 2015 RLSCB required.	
1.7.	All partners recognise the diversity of all communities in Rotherham and ensure services are responsive to need	The LSCB community reference group will produce regular updates to the CSE Sub Group on the impact of community engagement.	Rotherham LSCB	Oct 2015	Community Reference Group is in place and is a standard agenda item quarterly at the CSE Sub Group	
		Improving Lives Select Commission will undertake a annual review of community engagement activity.	Improving Lives Select Commission	July 2016	Report will make recommendations for any improvements identified and managed as per the scrutiny review process.	
		A commissioning review will inform a standardised approach across the market which will inform consistent equality impact assessments	Linda Harper	March 2016	Commissioning review is complete and is shortly to be submitted to the relevant boards for ratification by end Sept 2015	

## 2. PROTECT

Protecting children and young people who are at risk of sexual exploitation as well as those are already victims and survivors

No.	STRATEGIC OBJECTIVE	ACTIONS	LEAD OFFICER	WHEN	EVIDENCE OF PROGRESS	BRAG RATING
2.1.	The right multi-agency and social care services are in place to meet the needs of children at risk from CSE.	A Multi-Agency Safeguarding Hub (MASH) will be developed and fully operational by July 2015. It will work to agreed service standards, compliance with Working Together 2015 and will be clearly linked to the CSE service.	Jean Imray	Complete	MASH in place and operating in accordance with Working Together 2015.  Audits evidence clear links with CSE service.	
		A new multi- agency CSE team will be developed and implemented; staff will be recruited according to skills and experience in this area and will be trained and supported appropriately.	Jean Imray	Complete	CSE Team (EVOLVE) went live 01.07.15. Implementation group now in place which monitors progress and continuous improvement.  Initial feedback and indicators are positive	
		Effective screening tool will be developed and used to screen and assess risks in relation to children and young people referred to CSC.	Lynn McIntosh	Complete	Evidence in audit that screening tool being used to good effect and reported to Quality Sub Group of LSCB.	
		A programme of single and multi-agency audits will be undertaken in order to quality assure the standard of service provided across MASH and CSE services.	Nancy Meehan	March 2016	An indicative audit programme is now in place which requires monitoring through RLSCB.	
		An Assertive Outreach service will be developed to provide services designed to intervene where children are young people are deemed at risk of or exposed to CSE.	Jean Imray	Dec 2015	Good progress made in developing assertive put reach service in partnership with Barnardo's and survivor groups.	
2.2.	Victims of CSE and their families are supported with holistic interventions that enhance the potential for a child or young person to stay safe within their family and community.	The CSE service (Evolve) will ensure each young person has a victim support plan in place as is consistent with best practice.	Gary Ridgeway	Dec 2015	Victim support plans in place for all named operations. This approach to be embedded in core practice for victims.	
		A memorandum of understanding between the police and social care will be developed and implemented to ensure best possible joint practice in investigations of CSE	Lynn McIntosh	Complete	Memorandum of Understanding in place and used as evidence by audit	
		A range of services will be commissioned that will provide the right service at the right time for victims and families.	Linda Harper	Feb 2016	A range of service specifications are currently being developed based on	

No.	STRATEGIC OBJECTIVE	ACTIONS	LEAD OFFICER	WHEN	EVIDENCE OF PROGRESS	BRAG RATING
		Long term contracts awarded			evidence based need - to be completed by the end of October 2015. The subsequent tender will go to market at the beginning of Nov 2015.	
		An established network of "CSE Champions" from safeguarding practitioners across the partnership who are not part of Evolve will be identified trained and supported ensuring that specialism does not lead to isolation of expertise and all children and young people get an consistently good service.	Lynn McIntosh	Oct 2015	A number of CSE champions have been identified and are operational. Recruitment and training events continue.	
		Wherever there are live investigations of multiple CSE cases, a multiagency community response plan will be developed to ensure that all agencies – including schools – have a supported and consistent approach to communicating with children, families and other stakeholders	Terri Roche	Sept 2015	The plan is in place and can be initiated by an appropriate multi-agency group (eg Gold, Silver or complex strategy discussion)	
2.3.	Hotspots within the borough that are particular areas of vulnerability will have increased levels of activity by agencies	Patrol plans will be put in place for hotspot areas, to include policing resources supported by enforcement officers  Plans will be reviewed and amended in the light of emerging evidence about new or different hot spots.	Jason Harwin	December 2015	Hotspots are currently being identified and responded to. Outstanding action is to fine tune multi-agency decision making and information sharing for informed decision making.	
2.4.	Particular attention is given to children known to be most vulnerable including those who have been sexually abused or neglected within the family environment.	All Children at risk of CSE with additional vulnerabilities (Disabled Children, Child in Need, Child Protection and Looked After Children) and those open to CAMHS will have a care plan which addresses the identified risks by including the actions that will be taken to mitigate.	Nancy Meehan	December 2015	Initial scoping exercise has been completed to identify children engaged with services who may be vulnerable to CS. This will then inform appropriate care planning.	
		Mandatory training will be provided the Child Protection Conferencing service to ensure there are the requisite skills and knowledge in place.	Nancy Meehan	December 2015	Some training has already been delivered. Newly appointed Conference Chairs are still to be trained.	
2.5.	Statutory and regulatory powers across the partnership are fully utilised to ensure that children and young people at risk of or suffering CSE are protected quickly and effectively.	A CSE Joint Enforcement Team, populated by regulatory services and the police, will be developed in order to disrupt CSE activity where it is suspected of taking place at businesses (hotels, takeaways, taxis, pubs etc.) or other relevant locations.	Karl Battersby	Sept 2015	Draft service specification has been developed.  Currently there are some challenges in respect of establishing the team however, it is operating up to a point as a virtual team.	

No.	STRATEGIC OBJECTIVE	ACTIONS	LEAD OFFICER	WHEN	EVIDENCE OF PROGRESS	BRAG RATING
2.6.	Services are designed to be accessible and responsive to the needs of children and young people so that trust can be developed and they can feel they are getting the help they need.	Young Inspectors and Youth Cabinet will review the accessibility of CSE services and report on their responsiveness, based on consultation and feedback from service users.	Nancy Meehan	March 2016	Mystery shopping at Eric Manns building has taken place. As a result young people have designed an information poster for use in all youth service access points.	
2.7.	Agencies provide an effective response when children go missing in line with the locally agreed protocol	The multi-agency Missing Protocol will meet statutory requirements and is reflective of local issues/needs.  The lead officer for 'Missing' children will report jointly to the Operational Manager for CSE and the Head of Safeguarding.	Lynn McIntosh	Dec 2015	The Rotherham and South Yorkshire missing protocol has been updated to reflect national guidance and best practice.  Reporting lines are in place.	
		Performance management information will be produced and utilised to ensure compliance with the Missing Protocol, providing robust performance management, including a detailed oversight of Looked After Children.  There will be a monthly report submitted to DLT to ensure regular senior management oversight	Nancy Meehan	Oct 2015	Data spreadsheet now in place.  First report to DLT due end of September 2015.	
2.8.	Looked After Children receive a service that meets the statutory requirements and have an up to date care plan that takes into account their specific vulnerabilities	There will be a LAC sufficiency strategy in place that includes specific focus on the sufficiency of placements for LAC who have suffered or are at high risk of CSE.	Jane Parfremment	Nov 2015	This work has started but is resource intensive	
		There will be a review of the quality of RMBC residential provision including admissions policy and remedial action taken promptly where the need is identified.	Jane Parfremment	March 2016	Planning in progress	
		Commissioning and contractual arrangements for out of authority placements will be reviewed to ensure all contracts are clear in terms of expectations for high quality placements, particularly in terms of reporting missing episodes and access to CAMHS service where required.	Linda Harper	Sept 2016	Planning in progress	
		A review of Looked After Children placed in Rotherham borough by other local authorities will be undertaken to ensure these children have access to the same support as would be expected for a Rotherham LAC.	Jane Parfremment	Nov 2015	Review underway and will be subject to extraordinary MARP in due course to assess effectiveness of services.	

No.	STRATEGIC OBJECTIVE	ACTIONS	LEAD OFFICER	WHEN	EVIDENCE OF PROGRESS	BRAG RATING
		Develop a circular to all LAs setting out the local offer to LAC placed in Rotherham to include the response to CSE.	Jane Parfrement	May 2015	Letters sent to LAs May 2015. Next refresh due December 2015	
		Regulation 44 report will include analysis of risk and mitigation around CSE in all Rotherham Children Homes.	Jane Parfrement	February 2016	Planning in progress	
		Rotherham LAC placed in residential care in Rotherham and Out of Borough will have an up to date risk assessment in place. This will be rolled out to include all vulnerable LAC.	Lynn McIntosh	Nov 2015	This work has commenced	

### 3. PURSUE

Pursue, relentlessly, perpetrators of child sexual exploitation, leading to prosecutions of those responsible

No.	STRATEGIC OBJECTIVE	ACTIONS	LEAD OFFICER	WHEN	EVIDENCE OF PROGRESS	BRAG RATING
3.1.	Law enforcement and statutory agencies provide a prompt first line response to calls for help or reports that a crime may have been committed	A regular audit will be scheduled to review reports of CSE into the police and partners ensure that as crimes as per national guidance have been responded to appropriately.	Jason Harwin	Feb 2016	Police audit team are conducting data cleansing to ensure the necessary crimes are identified and recorded appropriately. The police are refreshing staff awareness of CSE related crime recording practice.	
3.2.	The necessary command structures will be put in place to oversee complex investigations and key meetings will be attended as appropriate by senior officers and managers from the relevant agencies.	Wherever live investigations are in place, the Police led response will include all relevant partners and there will be a community plan in place where appropriate	Jason Harwin	Sept 2015	A standing multi-agency Gold command is now in place for all named operations. This will initiate community plans where appropriate  The Evolve team are complying with joint working appropriately in accordance with the MOU and WT 2015 guidance.	
		All agencies will put in place the necessary arrangements to ensure that officers and managers of the requisite seniority attend and contribute to key groups and panels e.g. Multi-Agency Risk Panel, Performance and Quality sub groups,	Rotherham LSCB	October 2015	Quarterly report from MARP Chair next due October 2015	
3.3.	The time and necessary resources will be committed so that perpetrators of CSE are arrested, successfully prosecuted, convicted and deterred from reoffending. Resources will include the police officers and CPS and prosecuting lawyers with the requisite skills and knowledge to manage the complexity of	A published remit for the Evolve service will be produced with an associated development/implementation plan and outcomes focused performance scorecard	Gary Ridgeway	Sep 2015	Steering group in place with associated implementation plan and dashboard agreed.	
		South Yorkshire Police – Policing Plan will reflect CSE as a priority	Ingrid Lee	With immediate effect	SYP PCC Plan	
		A witness support strategy will be in place which ensures that all CSE victims are fully prepared for court and are supported throughout the criminal justice process. The Gold group for individual operations will be accountable.	Gary Ridgeway	Dec 2015	Bespoke witness plans in place for major operations. Roll out required across core business.	

	interviewing victims and suspects concerning disturbing sexual matters.	Special sexual violence training will be commissioned and provided to police and social workers to enhance their knowledge and understanding	Jean Imray	Dec 2015	Specialist training in place and delivered locally. First session delivered by Rape Crisis – August 2015  Further training needs monitored by CSE sub group	
3.4.	The National Probation Service and South Yorkshire Community Rehabilitation Company will work together to effectively manage perpetrators offering appropriate intervention to reduce re-offending.	Effective risk and enhanced offender management of perpetrators is in place when they return to the community	Sarah Mainwaring	Nov 2015	Six monthly update report from NPS to CSE sub group	
		Appropriate interventions are commissioned and delivered to perpetrators to reduce re-offending.	Sarah Mainwaring / Maryke Turvey	Nov 2015	Six monthly update report from NPS to CSE sub group/LSCB	

#### 4. PROVIDING SUPPORT Provide support for survivors of CSE, ensuring their needs are met.

No.	STRATEGIC OBJECTIVE	ACTIONS	LEAD OFFICER	WHEN	EVIDENCE OF PROGRESS	BRAG RATING
4.1.	The physical, psychological and emotional damage that is caused by CSE and its victims is understood and recognised and victims and survivors have access to a wide range of support and aftercare from more specialist services, which will be clear and easy to access. This will include timely access to mental health services where required.	An annual needs analysis will be produced (see 1.1) with associated gap analysis of services which expressly includes details in relation to victims of CSE.	Teresa Roche	Sept 2016	Current needs analysis to be approved imminently.	
		An Assertive Outreach service will be developed to work with identified or potential victims who are young people	Jean Imray	Dec 2015	Steering Group in place and agreed service specification. Anticipated go live date on track.	
		Services will be commissioned from a provider who is a recognised specialist in the field of sexual violence	Linda Harper Jean Imray	Oct 2015	Agreement has been reached to commission rape crisis on a pilot basis from Sept 2015 to March 2016 which will inform the longer term tendering of post support CSE services in Rotherham  The service is now in situ and will be monitored on a monthly basis linked to the outcomes in the service specification.	

4.2.	Services commissioned to support victims and their families are informed by what they want and need and are provided by specialists with the requisite skills, experience and leadership in the field of sexual violence.	A commissioning strategy will be developed which ensures the right services are available based on a needs assessment supported by the voices of victims and survivors.	Linda Harper	Oct 2015	Joint commissioning strategy has now been agreed which inform the detail of a specific CSE commissioning strategy	
		Contractual arrangements will be reviewed to ensure providers have the requisite skills, expertise, professional standards and governance arrangements in place.	Linda Harper	March 2016	A quarterly review of current of current commissioned services has been completed and is scheduled to report at the end of September 2015 which will inform the quality baseline and will ensure that the providers have the appropriate skills, experience, professional standards and governance in place.	
		Establish a service improvement partnership forum to take forward review recommendations	Linda Harper	August 2015	A service improvement partnership forum has been established which will be responsible for ensuring that the recommendations from the review are implemented	
4.3.	Victims and survivors are supported beyond their 18 <sup>th</sup> birthday particularly when they have additional vulnerabilities such as learning disability or are care leavers.	A transition/adult survivor board to include Adult disability services will be developed that to ensure that any survivor over the age of 18 has access to a service that meets their needs.	Lead action holder to be identified	Delivery date to be confirmed.	Adult survivor / victim board is in place and this may support a resource panel in due course.	BRAG rating to be confirmed.
		Commissioning Review to be undertaken of accommodation provision for care leavers	Linda Harper	Feb 2016	Initial review completed which will inform a more comprehensive service delivery.	
		A review of Pathway Planning for Care Leavers will be undertaken to ensure that the need for ongoing support for those who have experienced CSE is in place.	Jane Parfremment	Dec 2015	This has commenced	
4.4.	Services are developed and sustained where children, young people and families are able to access the right support directly themselves; or be identified by professionals or within	There will be a review of pathways into existing commissioned services to ensure self-referral options are in place	Jo Smith	Nov 2105	A service mapping exercise has been completed and this will inform appropriate review.	
		Commissioners will ensure that providers are able to submit regular service user feedback as part of their contractual agreements	Linda Harper	Nov 2015	A series of commissioning reviews currently underway will address this current gap.	



	the community and offered the right support at the time when it is needed.					
--	--	--	--	--	--	--

## 5. ENSURE THE PARTICIPATION OF ALL CHILDREN AND YOUNG PEOPLE & FAMILIES

Ensuring that the voices of children and young people are heard and listened to at all times

No.	STRATEGIC OBJECTIVE	ACTIONS	LEAD OFFICER	WHEN	EVIDENCE OF PROGRESS	BRAG RATING
5.1.	The views of children and young people, their families and communities are so vitally important that they must be sought at all points throughout service provision, to assure agencies that lessons have been and continue to be learned.	The LSCB has a clear standard about services listening to the "voice of the child".	Rotherham LSCB	March 2016	Current quality assurance and audit activity includes the voice of the child as a standard. This requires 6 months monitoring to provide due diligence.	
		Multi-agency assessment and plans from Early Help, Children in Need and Child Protection have a clear focus on capturing and responding to the voice of the child and their family.	Nancy Meehan	December 2015	Social Work assessment template is being piloted.	

		Where appropriate, young people are engaged as mentors and advocates to support other young people at risk of or experiencing CSE.	Nicole Chavaudra	March 2016	To be progressed	
5.2.	We will know that we are being effective in engaging with children and young people when there is evidence that their views and experiences and that of their families has influenced the development of services and the quality of responses. This will include the views and experience of adult survivors of CSE.	All agencies undertake appropriate and proportionate engagement with children and young people as part of any new service developments or changes applicable to CSE..	Rotherham LSCB	Nov 2015	There is a programme of engagement with every school in Rotherham to deliver CSE training to all Rotherham secondary schools over the next 2 to 3 years. Pilot commencing Sept 2015. The training is in the form of Drama productions.	
5.3.	While we will develop victim participation groups and develop the means by which we can capture feedback it is a clearly stated expectation that the views of young people are integral to all the developments listed above and those that will be developed in the future.	There is a community engagement approach which responds to the needs of each local area and includes the voice of children and young people and victims.	David McWilliams	Nov 2015	Staff changes have caused some delay.	
		The LSCB has direct contact with children and young people and engages them in relation to the progress of this delivery plan systematically.	Independent Chair LSCB	Sep 2015	LSCB "voice of the child" report published as part of Annual Report – September 2015.	
		There is formal link between community groups affected by CSE and the LSCB, facilitated by regular co-meetings.	Independent Chair LSCB	July 2015	A meeting of representatives from community groups has been established and meets quarterly. This includes the representation of views of those impacted by CSE.	
5.4.	We will ensure that we engage with and include small to medium sized organisations with strong connections to the local community and which support victims and survivors to participate in shaping service delivery, take up volunteering opportunities and engage with local policy development.	Targeted campaigns (Operation Makesafe) with the Federation of Small Business and the Chamber of Commerce are undertaken to raise awareness with local businesses.	Jason Harwin	Sep 2015	Training and awareness delivered to Hotels and B&Bs.  CSE Awareness raising at FSB event – June 2015  Barnardo's workers to focussing on night time economy including service stations.	
		The Rotherham Standing Together Campaign promotes increased awareness raising and pathways for business to seek advice, guidance and support from statutory agencies.	Tracy Holmes	September 2015	Report on activity as and when undertaken as part of wider CSE awareness raising forward plan	



## GLOSSARY OF TERMS

RMBC	Rotherham Metropolitan Borough Council
CSE	Child Sexual Exploitation
RLSCB	Rotherham Local Safeguarding Children Board
LSCB	Local Safeguarding Children Board
JSNA	Joint Strategic Needs Assessment
CAMHS	Child and Adolescent Mental Health Services
CCG	Clinical Commissioning Group
MARP	Multi Agency Review Panel
PRU	Pupil Referral Unit
MASH	Multi Agency Safeguarding Hub
Evolve	Multi-Agency CSE Service
DLT	Directorate Leadership Team
LAC	Looked After Child
LA	Local Authority
MOU	Memorandum of Understanding
WT 2015	Working Together 2015 Statutory Guidance
SYP	South Yorkshire Police
PCC	Police and Crime Commissioner
NPS	National Probation Service
FSB	Federation of Small Businesses